



PoHang Go Hang							
By Griffin							
Falcon Version	Patch Status	Theatre of Operations (Check one)					
BMS	4.32 Patch 7	Korea	X	Korea PvP		Korea Old Aircraft	
		Korea Original		Korea Strong DPRK		Israel 0.991	
		Battle for Balkans 1.15 SP		Battle for Sinai 2.23 SP			
Package Information							
Takeoff time	Callsign	Data ID	Task	Target	Package #	AC # & type	
03:45:00	Chalis 1		AWAC		1524	1 x E-3	
04:12:00	Python 1		DCA	Server flight	1433	1 x F-16C-30	
04:14:00	Lobo 1	4	SEAD Escort	Enemy SAM threats	3704	4 x F-16C-52	
04:16:00	Panther 1	5	Escort	Enemy air threats	3704	4 x F-16C-52	
04:18:00	Cowboy 1	1	Deep Strike	Destroy docks	3704	4 x F-16C-52	
04:20:00	Falcon 1	2	Deep Strike	Destroy runway	3704	2 x F-16C-52	
04:22:00	Fury 1	3	Deep Strike	Destroy warehouse	3704	2 x F-16C-52	
(1) Blue colour indicates for human use. Red colour indicates for AI only.							
Mission Success criteria			Cowboy	Destroy the last five Warehouses on the recon list for the port.			
			Falcon	Destroy the runway (six hits) and the control tower at Pohang AB			
			Fury	Destroy the Assembly and Admin Buildings at Pohang Steel Mill			
			Lobo	Protect the package from radar SAM threats up to the target and both SAM and air threats to Kangnung with no losses.			
			Panther	Protect the package from air threats to Kangnung with no losses to strike flights.			
Mission Partial Success criteria			Cowboy	Destroy the last three Warehouses on the recon list for the port.			
			Falcon	Destroy the runway (six hits) at Pohang AB			
			Fury	Destroy the Assembly Building at Pohang Steel Mill			
			Lobo	Protect the package from radar SAM threats up to the target and both SAM and air threats to Kangnung with a max of 2 losses to the strike flights.			
			Panther	Protect the package from air threats to Kangnung with a max of 2 losses to strike flights.			
Communications Frequencies			UHF	CH	VHF	CH	DL
Kadena (Fukuoka) ATC			225.500	15			
Kangnung ATC			334.900	16			
AWACS/Package			307.300	13			

Cowboy 1 (Tacan 11/74)			138.050	1	1X
Falcon 1 (Tacan 16/79)			138.100	2	2X
Fury 1 (Tacan 21/84)			138.200	3	3X
Lobo 1 (Tacan 26/89)			126.200	4	4X
Panther 1 (Tacan 31/94)			134.250	5	5X
Air to Air Weapon Loadout (Free or Fixed)	Free				
Air to Ground Weapon Loadout (Free or Fixed)	Free (but no JSOWs)				
Mission Flight plan (Free or Fixed)	Fixed				

BACKGROUND

The DPRK has grown careless after many years of occupation and the time to retake the country is upon us.

CURRENT SITUATION

The marine's and other army units have made land fall in the SE corner of Korea, with assaults launched from Japan. A secondary foothold at Kangnung has been made. We hope to exploit this double invasion to add some disarray to the defending forces, at least long enough to cement our positions there while we bring in more supplies and troops.

MISSION DETAILS

Mission – Pohang is a hub for the enemy and it is important to hit them hard at this location. Your package will be one of many to attack the installations there.

Target – You shall be tasked with quelling SAM defences and any airborne assets they may confront you. You shall also attack the port, airbase and steel mill.

Weather – Weather is currently very bad with limited visibility. Hopefully the enemy won't think you are going to fly until it is too late.

Temp 9°C

Wind 14 knots from 220°

Cloud base 7000' with con layer at 20000'

Conditions are likely to change for the better soon after takeoff and the visibility at the target should be clearer.

Enemy – The enemy has multiple mobile and static air defences as well as a mixed supply of low to high threat aircraft.

Friendly – Flights to Kangnung from the aircraft carrier off the east coast shall be patrolling the area.

AWACs shall be available

Other strike packages shall be in the local theatre of operations.

Route – Strict adherence to departure procedures at Kadena on rwy 19 shall be required as shall approach to Kangnung. Necessary data sheets are attached and should be printed for use in the cockpit.

The SEAD and Escort flights shall re-group for the approach at TOYOTA before proceeding.

All three strike flights shall also regroup at TOYOTA to co-ordinate and combined attack.

ROE – Check any contacts as friendlies may be in front or around you. ANY Blue on Blue hit shall be deemed a mission failure for the whole package. You have been warned.

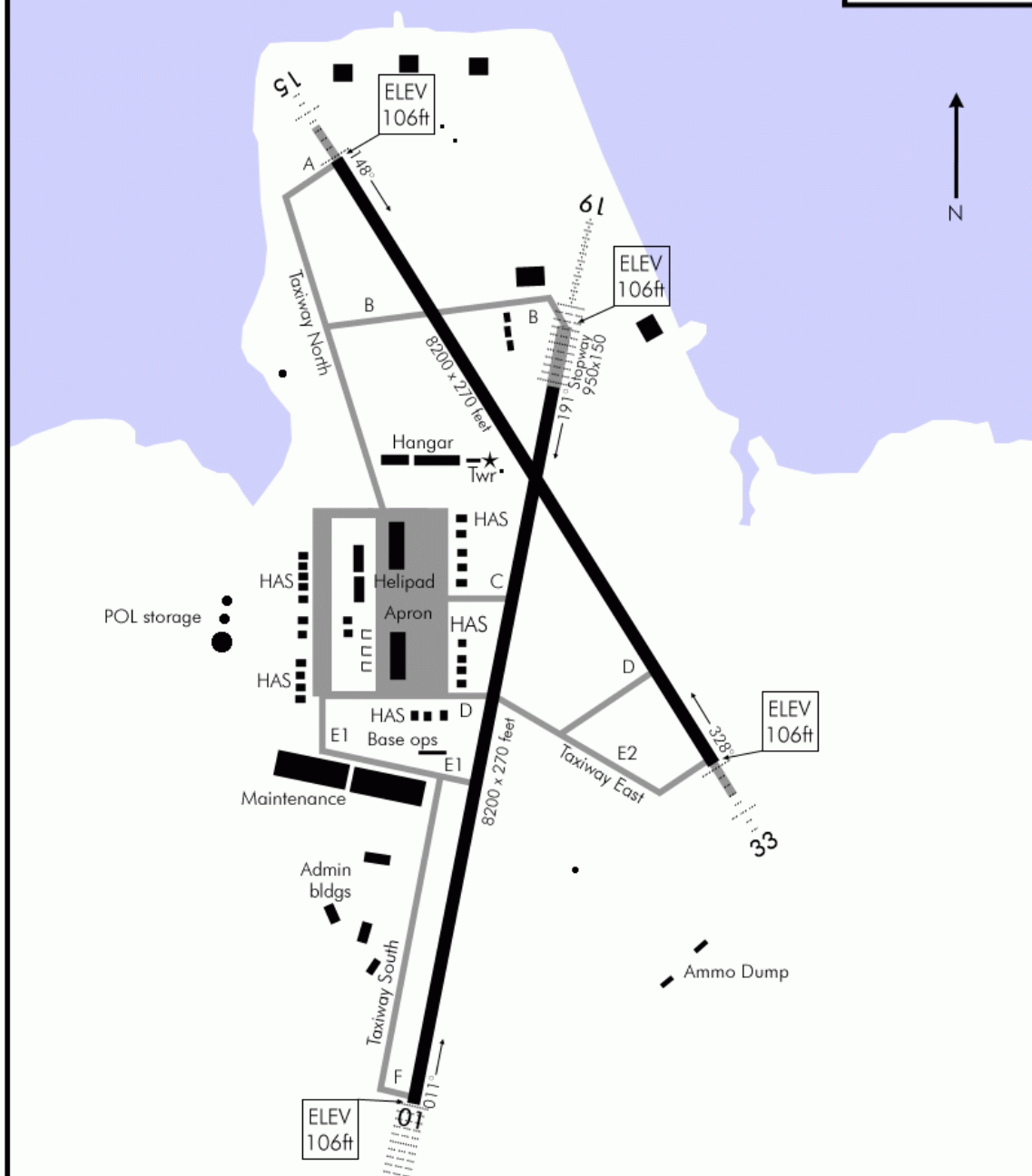
Ordnance – Loadout is free but the use of JSOW's is not allowed in order to protect as much of the local population and their buildings as possible.

Good Luck

AIRPORT DIAGRAM

Date: 29 Dec 2009

TACAN:	TWR:	TRANS LEVEL:	TRANS ALT:	GPS:	ELEV:	
057X	225.5/126.2	FL140	14000ft	N34°38,88' E132°55.32'	106'	



AIRPORT DIAGRAM

© COMBATSIM CHECKLISTS 2010

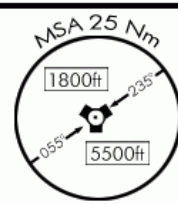
FUKUOKA (KADENA)(RJFF)
JAPAN

NOT FOR REAL NAVIGATION - FALCON 4 BMS ONLY

DEPARTURE

Date: 29 Dec 2009

TACAN:	TWR:	TRANS LEVEL:	TRANS ALT:	GPS:	ELEV:
057X	225.5/126.2	FL140	14000ft	N34°38,88' E132°55.32'	106'



TOYOTA NORTH DEPARTURE

TOYOTA (Exit Point) ★
R-310° DME16
N34°49.35' E132°41.85'

WARNING:
Fly odd altitudes Westbound

HDG 310°

R-310°

DEPARTURE ROUTE DESCRIPTION

TAKE-OFF RWY 01: Left climbing turn as soon as practicable to intercept R-310° outbound Fukuoka tacan. Track R-310° outbound to Toyota. Thence...

TAKE-OFF RWY 15: Climb on Rwy heading to DME 3 and intercept R-310° outbound Fukuoka tacan to Toyota. Thence...

TOYOTA (Exit Point) ★
R-310° DME16
N34°49.35' E132°41.85'

TOYOTA SOUTH REVERSAL

WARNING:
Fly odd altitudes Westbound

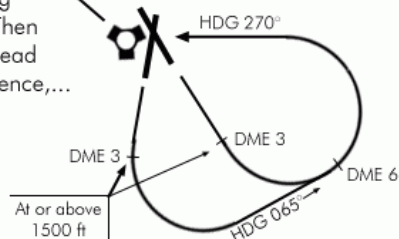


R-310°

DEPARTURE ROUTE DESCRIPTION

TAKE-OFF RWY 19: Climb on Rwy heading to DME 3. Reach DME 3 at or above 1500ft. Then left climbing turn to heading 065° until reaching DME6. Then left climbing turn direct to the station. Overhead Tacan, track R-310° outbound to Toyota. Thence,...

TAKE-OFF RWY 33: Climb on Rwy heading to DME 3. Reach DME 3 at or above 1500ft. Then left climbing turn direct to the station. Overhead tacan, track R-310° outbound to Toyota. Thence...



DEPARTURE

© COMBATSIM CHECKLISTS 2010

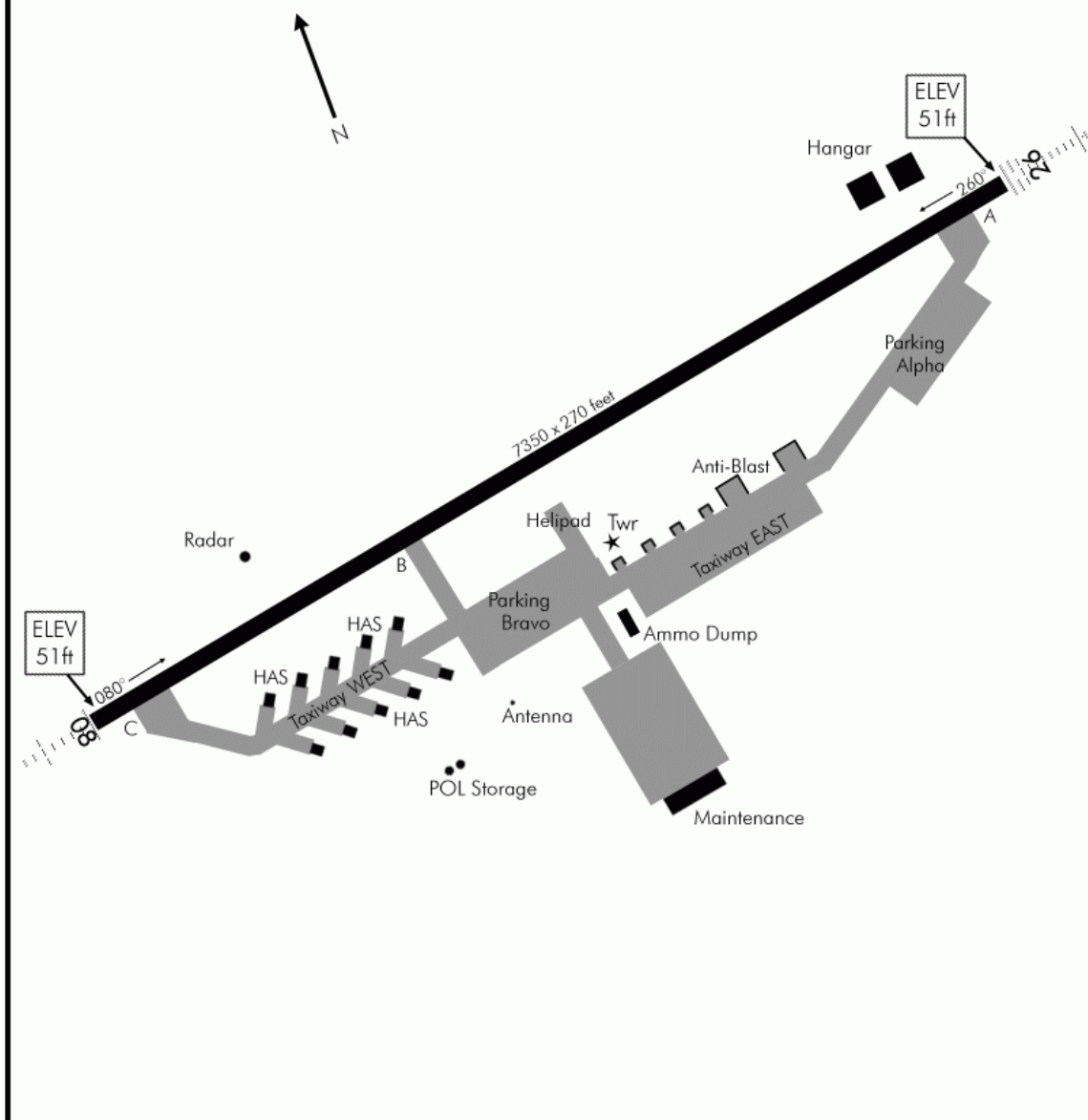
FUKUOKA (KADENA)(RJFF)
JAPAN

NOT FOR REAL NAVIGATION - FALCON 4 BMS ONLY

AIRPORT DIAGRAM

Date: 2 Nov 2009

TACAN:	TWR:	TRANS LEVEL:	TRANS ALT:	GPS:	ELEV:	
056X	334.9/126.2	FL140	14000ft	N37°47,31' E130°29.77'	051'	



AIRPORT DIAGRAM

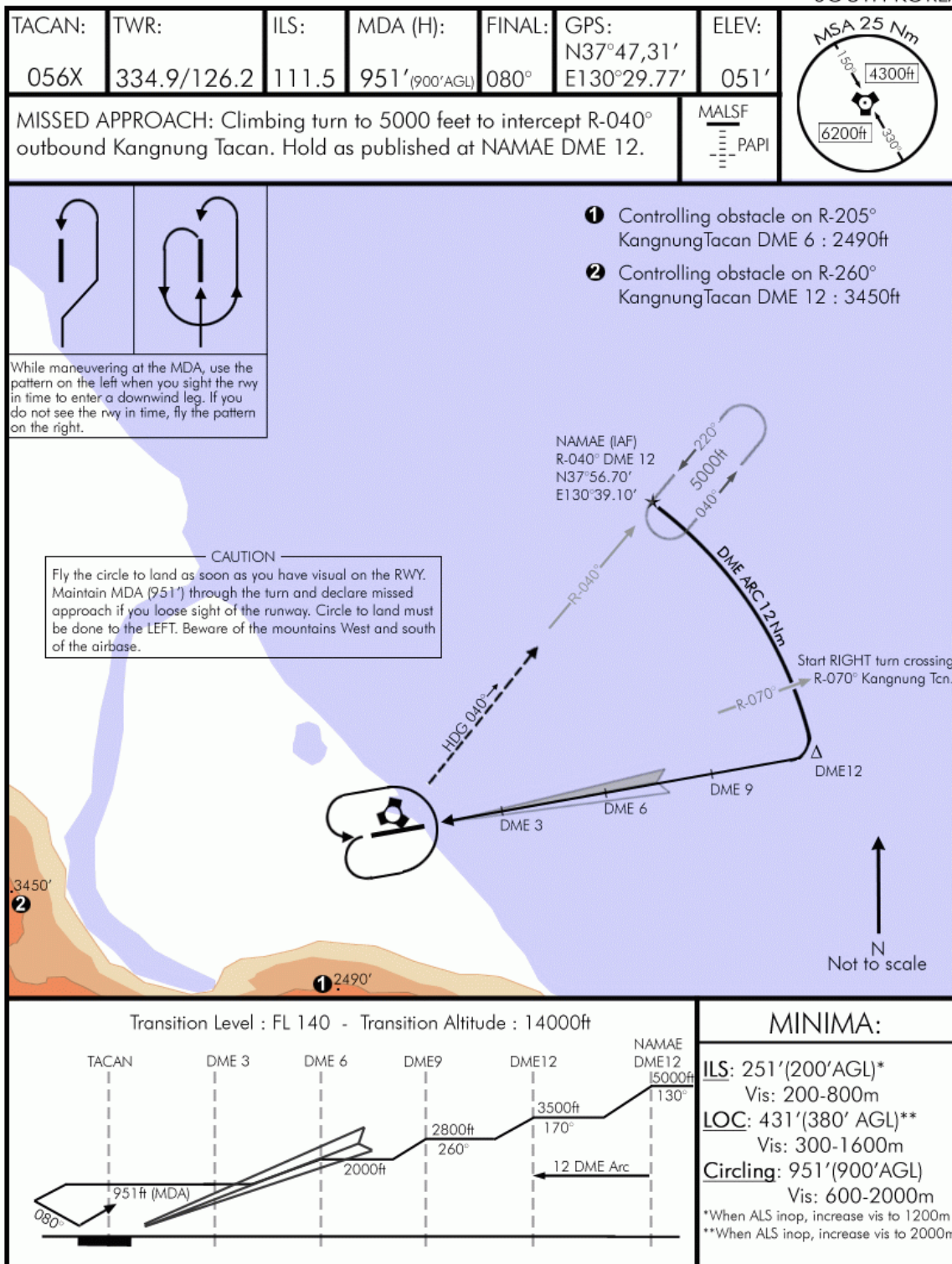
© COMBATSIM CHECKLISTS 2010

KANGNUNG AERO (RKNN)
SOUTH KOREA

NOT FOR REAL NAVIGATION - FALCON 4 BMS ONLY

CIRCLE TO LAND RWY 08

Date: 2 Nov 2009

KANGNUNG AERO (RKNN)
SOUTH KOREA

CIRCLE TO LAND RWY 08

NOT FOR REAL NAVIGATION - FALCON 4 BMS ONLY

© COMBATSIM CHECKLISTS 2010

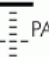
KANGNUNG AERO (RKNN)
SOUTH KOREA

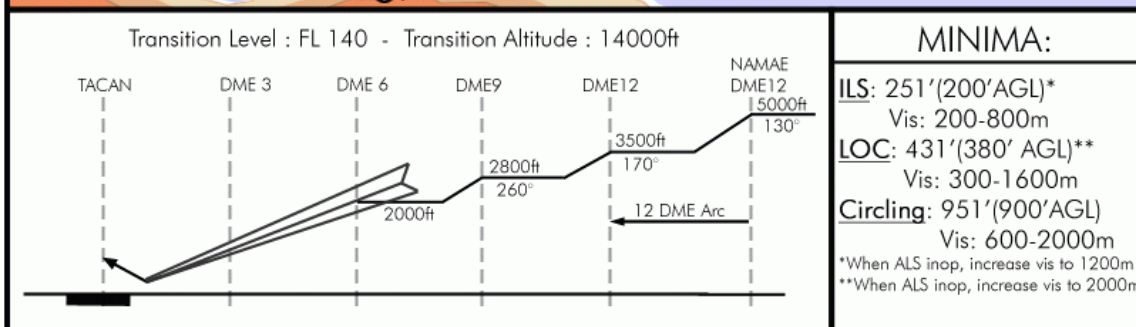
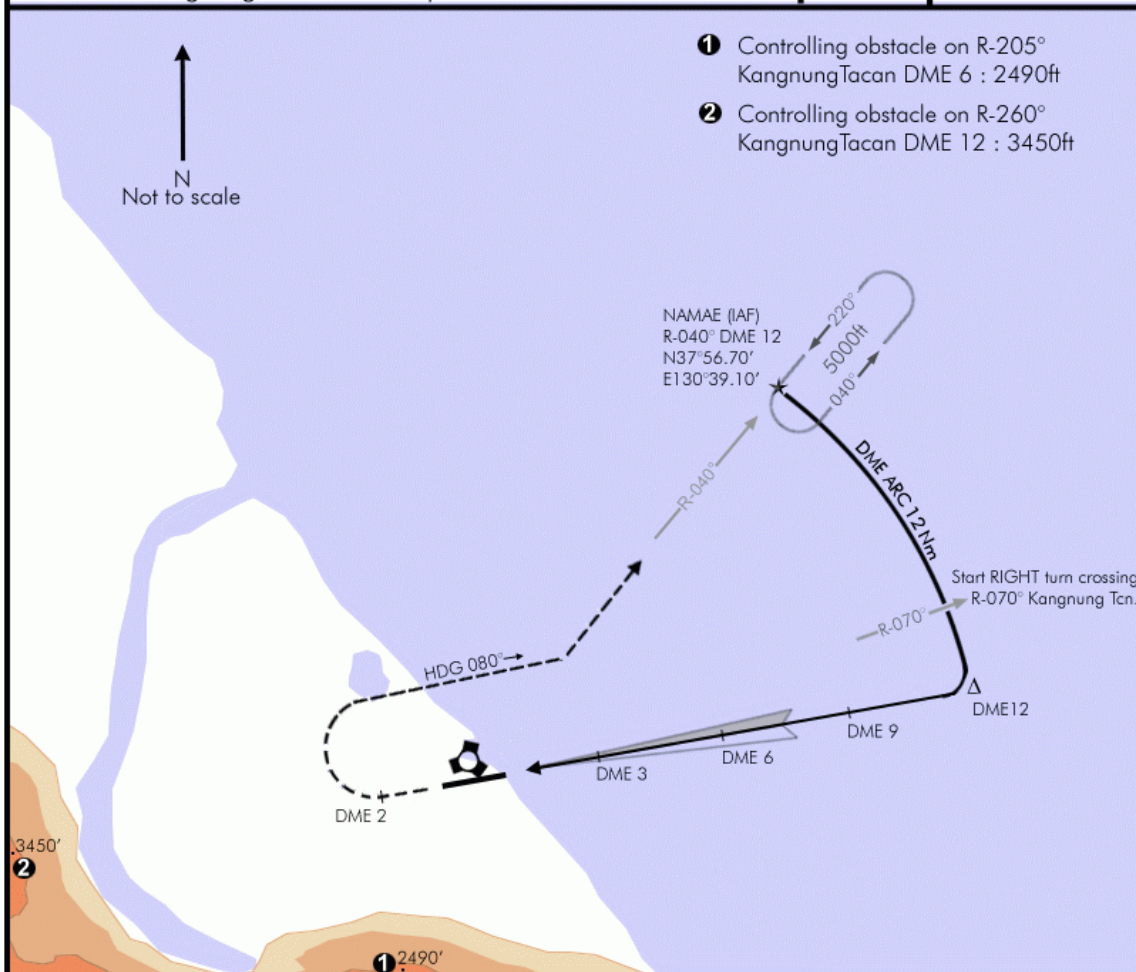
KOREAN NAVIGATION VOLUME

ILS RWY 26

Date: 2 Nov 2009

KANGNUNG AERO (RKNN)
SOUTH KOREA

TACAN:	TWR:	ILS:	ILS DA(H):	LOC:	GPS:	ELEV:	
056X	334.9/126.2	111.5	251' (200' AGL)	260°	N37°47.31' E130°29.77'	051'	
MISSED APPROACH: Climb on runway heading to DME 2, then climbing RIGHT turn to 5000ft heading 080° until intercepting R-040° Outbound Kangnung tacan Hold as published at NAMA E DME 12.							ALS F-1  PAPI



ILS RWY 26

NOT FOR REAL NAVIGATION - FALCON 4 BMS ONLY

© COMBATSIM CHECKLISTS 2010

KANGNUNG AERO (RKNN)
SOUTH KOREA